

BEST IN CLASS  
STORAGE  
ULTRA-LITE SEGMENT

GT SERIES TRAVEL TRAILERS AND  
SL SERIES TRAVEL TRAILERS  
[keystonerv.com/passport](http://keystonerv.com/passport)

# PASSPORT



The ultimate  
ownership experience.

# The ultimate ownership experience.

The goal of Keystone RV Company is to surprise and delight our owners at each and every touchpoint. We're happy when our campers are happy, and we are committed to providing the very best ownership experience in the industry.



**Keystone RV  
Company**

## 1 EASIER SHOPPING.

At Keystone, we make choosing an RV as easy as finding the Big Dipper on a dark summer night. With comprehensive online product information, Key Connect™ product advisors, and an unparalleled dealer network, we will help you select the perfect RV for your family's adventure.

## 2 INNOVATIVE THINKING.

The road's a nicer place when you have the industry's smartest features behind you. Keystone leads the pack in patented innovations that make our RVs safer, more comfortable, and easier to operate.

## 3 LONG HAUL QUALITY.

To keep you on the road, there are certain things we just won't build a Keystone RV without. Game-changing features like our Unified Wiring Standard, Tru-Fit™ five-point slide construction, and no-fail Tuf-Lok™ A/C duct joiners combined with exhaustive testing and inspections are some of the reasons why Keystone is able to offer our owners the industry's best 3-year limited structural warranty.

## 4 WORRY-FREE CUSTOMER SERVICE.

Wherever the road takes you, you're never too far from an authorized Keystone service center. We also offer live service assistance, ultra-fast parts shipping, online maintenance tips and tricks, and a single-point warranty claims policy. *That's* peace of mind.

## 5 KEYSTONE NATION.

When you choose Keystone, you become a part of one of the largest camping families in the country. We're Keystone Nation. A friendly community where people share photos, travel tips and amazing stories – all in the spirit of camaraderie and adventure. Come join us.

Experience the Passport lifestyle by visiting [#keystonepassport](https://www.instagram.com/keystonepassport)



# PASSPORT



SL SERIES TRAVEL TRAILERS | GT SERIES TRAVEL TRAILERS

## Less AND More: The All-New Passport

Redefining expectations for ultra-lightweight travel trailers, the redesigned Passport GT and SL Series offers less weight and more of everything – more style, more comfort, more technology, and more ways to maximize your camping adventures.

# Keystone EXCLUSIVE Innovations

Year after year, Keystone RV's experienced team delivers "Built For The Long Haul" quality you expect and exclusive innovations you won't find anywhere else.



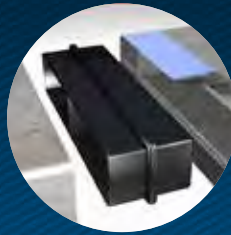
## 3-year Limited Structural Warranty, 1-year Limited Base Warranty

Every new Keystone RV comes with the industry's best three-year limited structural warranty AND a one-year limited base warranty. Ask your dealer, visit [keystonerv.com](http://keystonerv.com), or call Keystone Owner Relations for details.



### KeyTV™

No more connection guesswork or poor reception. KeyTV offers a game-changing, single point of control of over-the-air, cable, and satellite feeds.



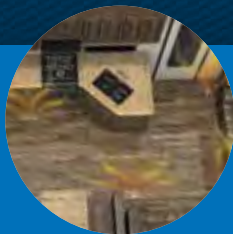
### Tuf-Lok Thermoplastic Duct Joiners

Tuf-lok thermoplastic duct joiners form a permanent, crush-resistant seal in your air-conditioning duct.



### Color-Coded Unified Wiring Standard

Easy-to-trace circuits simplify electrical and entertainment system troubleshooting.



### In-floor Heating Ducts

Distributes heat evenly through your coach for superior comfort.



### 4G LTE and Wi-Fi Prep

All units are equipped with a new antenna that integrates 4G LTE and Wi-Fi with standard VHF/UHF/AM/FM reception.



### Tru-fit™ Slide Construction

A more durable slide room design that minimizes functional motor and structural stress and resists leaking.

## Thoughtful Design

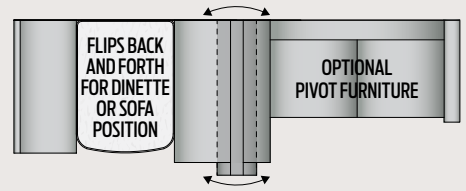
The Passport team has included dozens of convenient features in every model.



**Deep-seated Stainless Steel Sink**  
Includes cover and residential pull-down faucet



**Pivot™ Multi-function Slide Room Furniture**  
Levered dinette seatback shifts to create an expansive L-shaped sofa, now large enough for lounging or to seat the entire family. Includes storage beneath seats.



**NEW!**



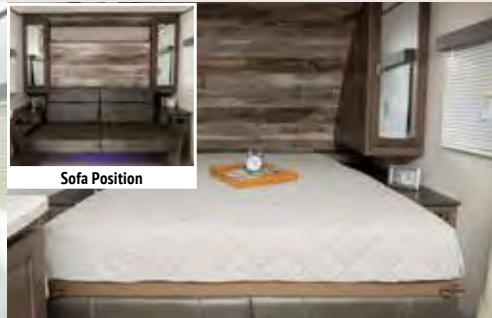
**Furrion® Glass-top Range and Oven**  
Cook in style with a Furrion glass-top range and oven. Glass cover folds to become a backsplash when in use.



**Built-in USB Ports**  
Keep devices charged for the next adventure with ten USB charging ports featured in every Passport floorplan.



**Residential-size Queen Bed**  
Passport makes it easy to customize your bedroom. All Passports feature a 60" x 80" bed that uses standard queen size bedding (N/A 3351BH and 175BH).



**New & Improved Murphy Bed**  
The new 60" x 80" mattress folds easily into a sofa for extra daytime seating.



**Termination Valve Service Light**  
Standard on all models, this light allows adjustments to be made with two hands, no flashlight required.



**Waterproof Composite Flooring**  
Comprised exclusively of non-organic materials, Keystone's new floor design won't rot, mold, swell, or mildew.



**Electric Stabilizer Jacks**  
All units now standard with electric stabilizers.

## Modern Amenities

From USB ports to sophisticated appliances that eliminate common frustrations, Passport brings a more modern approach to camping.



more product detail at  
[www.keystonerv.com/Passport](http://www.keystonerv.com/Passport)



## Light & Lively

Passport is bringing a fresh perspective to travel trailers with breezy new wall coverings and roomy vaulted ceilings. With careful planning and material selection, the Passport design team has added residential upgrades including wood-panel doors, pressed countertops and high arc kitchen faucets, all while keeping these units at an oh-so-towable weight.



### A Study in Contrasts

Light flooring, countertops, and wall coverings are a modern complement to the clean lines of Passport's mid-tone wood cabinetry and satin nickel finishes.



### Show-stopping Touches

Passport's master bedroom is transformed with a rustic, reclaimed wood feature wall and recessed accent lighting.





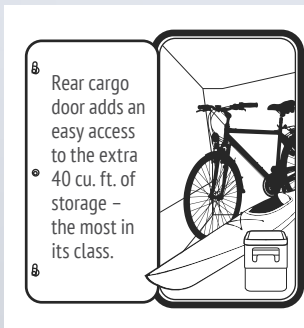
### WHAT DOES BEST IN CLASS STORAGE MEAN TO YOU?

(BICS) Many of Passport's bunkhouse floor plans provide up to 85 cu. ft. of interior storage, nearly double the amount compared to other ultra-lites. We keep Passport travel trailers the lightest in the ultra-lite class so you can take all your gear with you on your next adventure.

## Passport GT Series

### TRAVEL TRAILERS

- Automotive painted fiberglass front cap
- Lippert® Solid Step® for safe and secure entry
- Exceptional 45 cu. ft. pass-through storage with magnetic door hold
- Exterior television hookup
- Exterior hot and cold shower
- Load equalization axles (stability and weight equalization)
- Service light near termination valves
- Exclusive KeyTV™ multisource controller for satellite, cable, and over-the-air feeds
- 4G LTE and Wi-Fi prep
- Solar prep
- Backup camera prep
- Black tank flush
- Heated and enclosed underbelly and valves
- Vaulted ceiling
- 60" x 80" queen bed (N/A 3351BH)
- USB ports (10)
- Seamless, one-piece upgraded countertops
- Furrion® glass-top range with gas oven
- Deep-seated stainless steel sink with cover and residential pull-down faucet
- High performance in-floor heat duct system
- Motion activated lighting at main entrance and pass-through storage
- Power tongue jack
- 8 cu ft refrigerator
- Electric stabilizer jacks



**Rear Cargo Door on all Double-Over-Double Bunks**  
Convenient added storage (239ML, 240BH, 267BH, 2600BH, 2820BH and 2950BH)



**Lippert® Solid Step®**  
Safe and secure main entry with extendable legs and feet for maximum stability



**Outside Kitchen**  
Prepare meals campside with outdoor cooktops, refrigerators and sinks on select models.

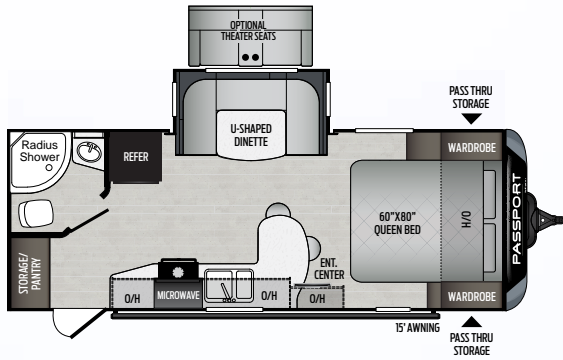


**Automotive Grade Painted Fiberglass Front Cap**  
Passport caps include Keystone's exclusive KeyGuard™ protective coating, designed to provide chip and rock protection.

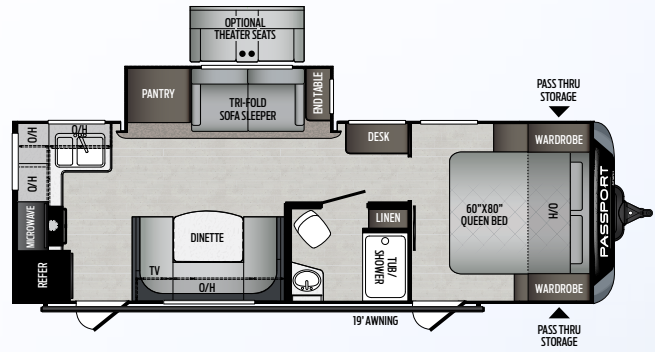


# Passport GT Series

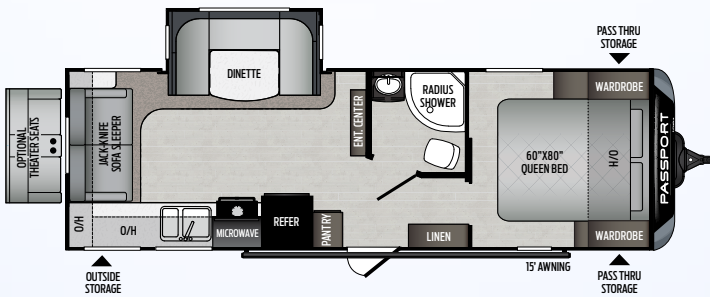
## TRAVEL TRAILER FLOOR PLANS



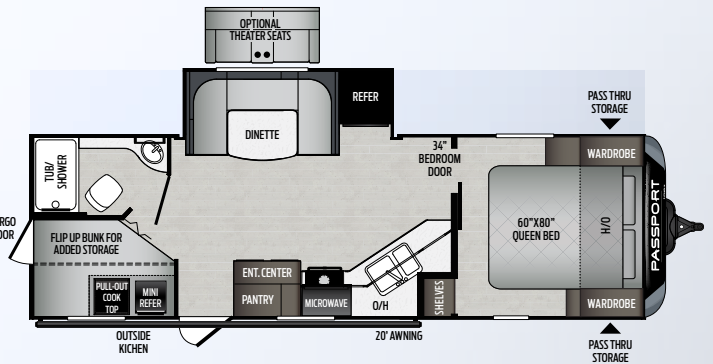
**2210RB** | Super slide w/ oversized bathroom  
Weight: 4854 lbs | Length: 26' 3"



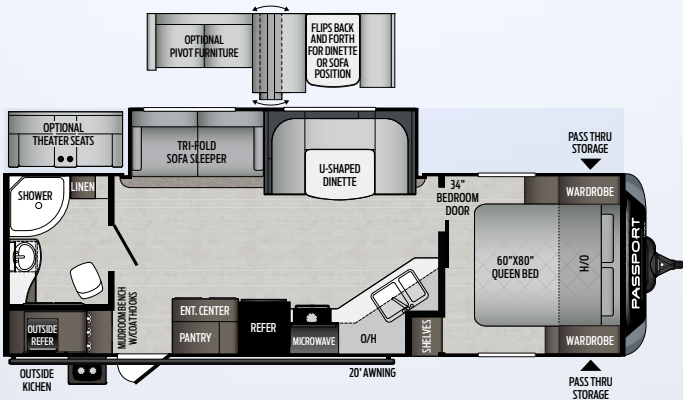
**2500RK** | Single slide, ultimate couples' coach w/ desk  
Weight: 5546 lbs | Length: 29' 3"



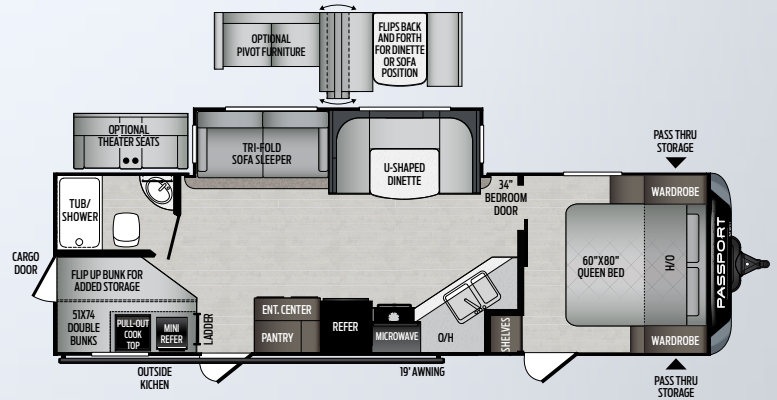
**2521RL** | Single slide, ultimate couples coach  
Weight: 5359 lbs | Length: 29' 10"



**2600BH** | Double over double bunkhouse, with outside kitchen  
Weight: 5473 lbs | Length: 30' 8"



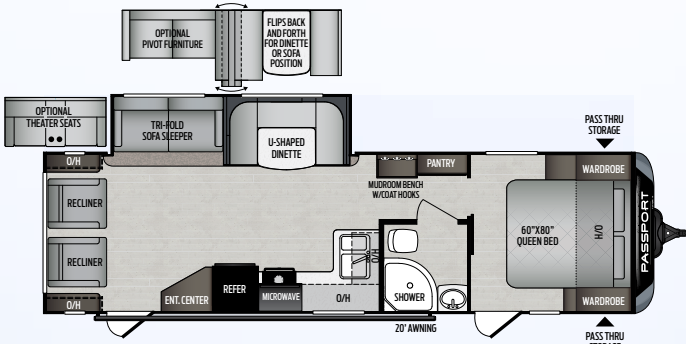
**2710RB** | Mudroom bench with coat hooks/walk-in pantry  
Weight: 5770 lbs | Length: 31' 5"



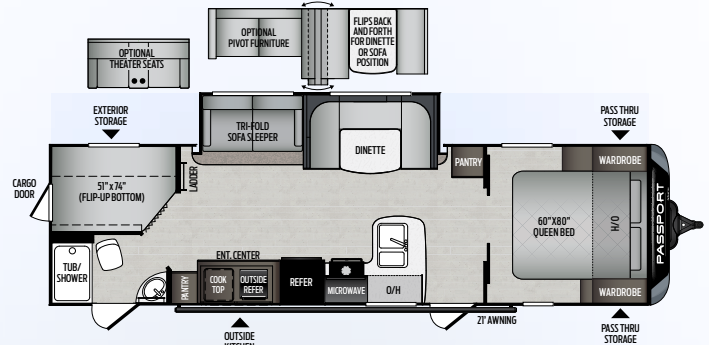
**2820BH** | Multi-purpose bunkhouse w/ outside kitchen  
Weight: 5966 lbs | Length: 32' 11"

# Passport GT Series

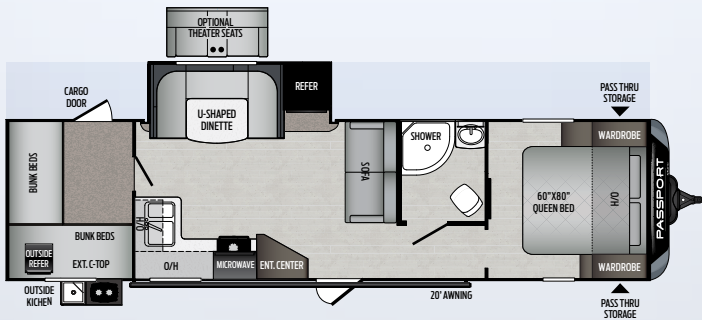
## TRAVEL TRAILER FLOOR PLANS



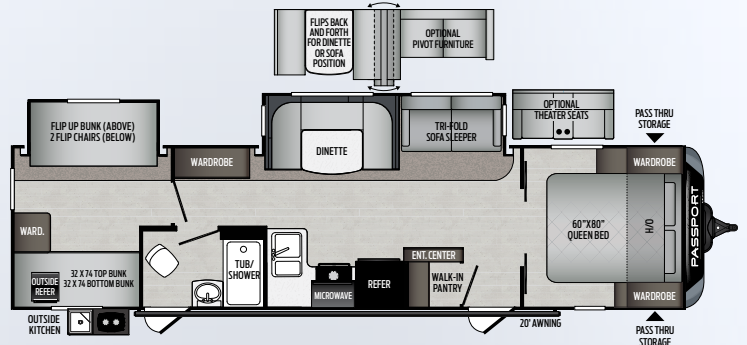
**2900RL** | Super-slide/rear living  
Weight: 5980 lbs | Length: 33' 6"



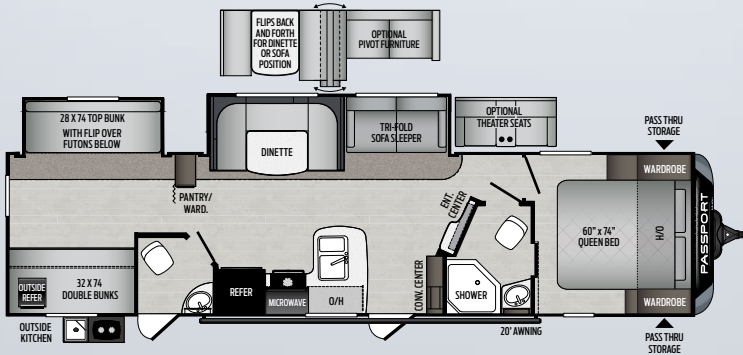
**BEST IN CLASS STORAGE** **2950BH** | Multi-purpose bunkhouse w/ outside kitchen  
Weight: 6145 lbs | Length: 33' 9"



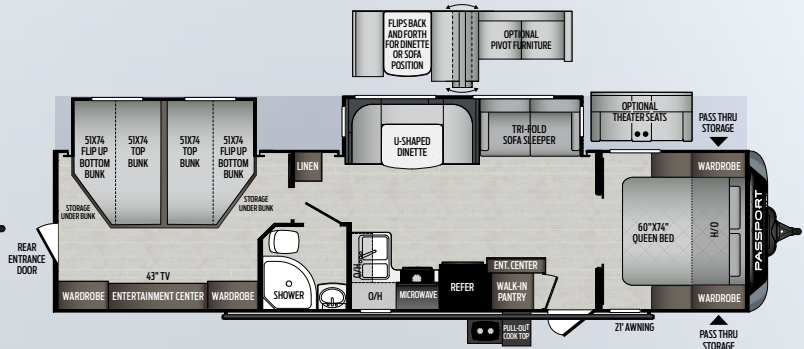
**BEST IN CLASS STORAGE** **3100QB** | Quad bunk w/ outside kitchen  
Weight: 6405 lbs | Length: 35' 11"



**3221BH** | Sleeps 8-10 w/outside kitchen  
Weight: 6860 lbs | Length: 36' 11"



**3351BH** | Bath-N-Half bunkhouse  
Weight: 7020 lbs | Length: 37' 7"



**ROYAL WOOD** **BEST IN CLASS STORAGE** **3400QD** | Private quad bunkroom w/full sized beds  
Weight: 7510 lbs | Length: 38' 4"



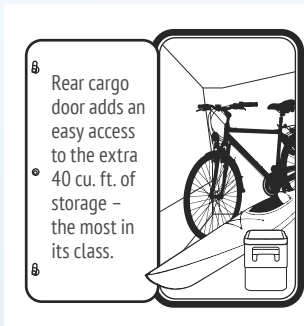
### WHAT DOES BEST IN CLASS STORAGE MEAN TO YOU?

(BICS) Many of Passport's bunkhouse floor plans provide up to 85 cu. ft. of interior storage, nearly double the amount compared to other ultra-lites. We keep Passport travel trailers the lightest in the ultra-lite class so you can take all your gear with you on your next adventure.

## Passport SL Series

### ULTRA-LITE TRAVEL TRAILERS

- Exceptional 45 cu. ft. pass-through storage with magnetic door holds
- Electric stabilizer jacks
- Exterior hot and cold shower
- Service light near termination valves
- EXCLUSIVE KeyTV™ multisource controller for satellite, cable, and over-the-air feeds
- 4G LTE and Wi-Fi prep
- Solar prep
- Blank tank flush
- 60" x 80" queen bed (N/A 175BH)
- USB ports throughout
- Furrion® glass-top range with gas oven
- Seamless, one-piece kitchen countertops
- Deep-seated stainless steel sink with cover
- Residential pull-down faucet
- Motion activated lighting at main entrance and pass-through storage
- 6 cu. ft. refrigerator
- High performance in-floor heat duct system (standard in models 240BH, 267BH and 292BH)
- Heated and enclosed underbelly and valves



**Rear Cargo Door on all Double-Over-Double Bunks**  
Convenient added storage (239ML, 240BH, 267BH, 2600BH, 2820BH and 2950BH)



**Furrion® Kitchen Appliances**  
Chef-inspired appliances that give you the perfect blend of performance, precision and style.



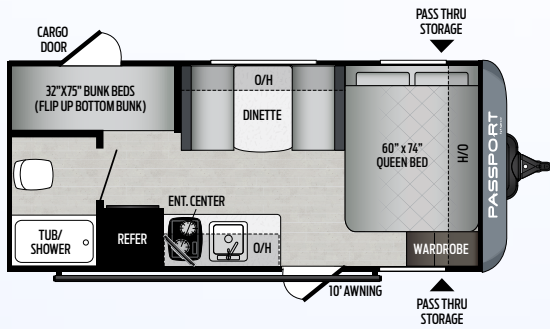
**Pass-through Storage with Oversized Baggage Doors**  
There is plenty of room to take all of your family's supplies with you on your adventure.



**Seamless, One-piece Countertops**  
Sturdy and water-resistant, these beautiful countertops are a Passport standard.

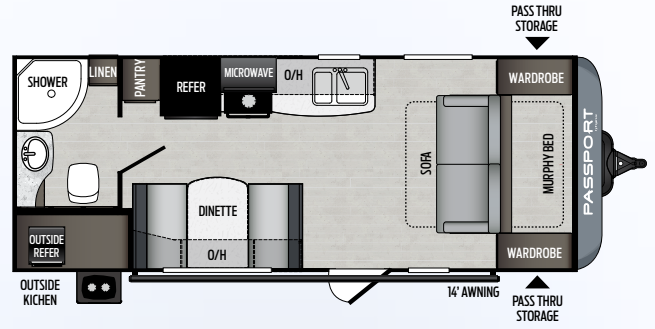
# Passport SL Series

## ULTRA-LIGHTWEIGHT TRAVEL TRAILER FLOOR PLANS



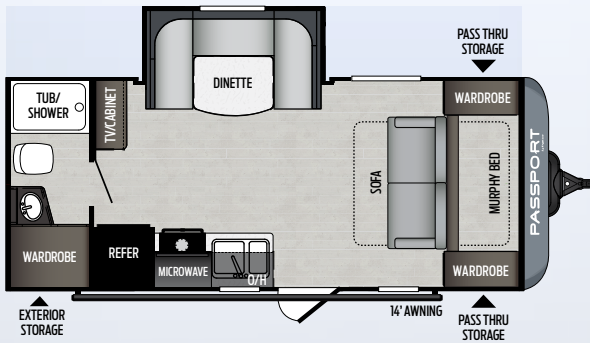
**175BH**

Single-axle bunkhouse w/ queen bed  
Weight: 3421 lbs | Length: 21' 3"



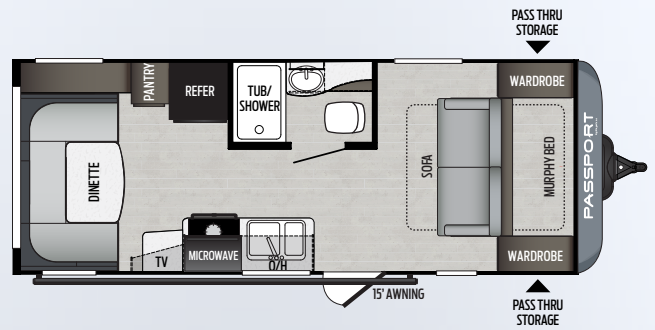
**197RB**

Double-axle couple's coach  
Weight: 4152 lbs | Length: 23' 11"



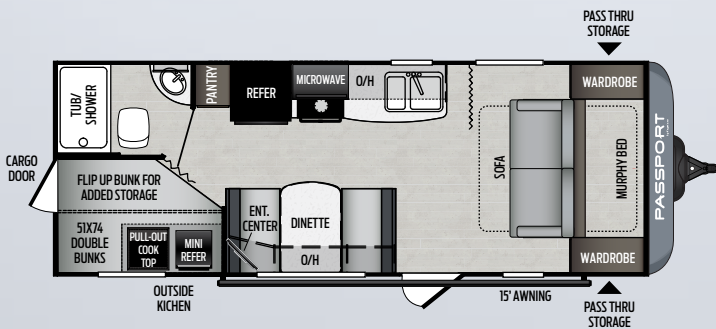
**199ML**

Single-slide couple's coach  
Weight: 4147 lbs | Length: 22' 9"



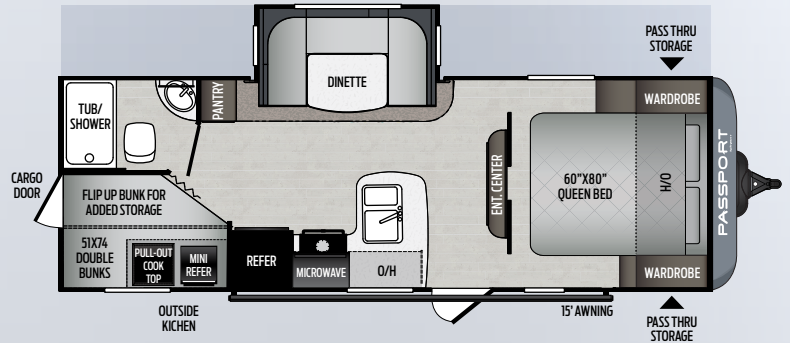
**216RD**

Couple's coach w/ oversized dinette  
Weight: 3925 lbs | Length: 24' 10"



**239ML**

Murphy bed, bunkhouse with outside kitchen  
Weight: 4307 lbs | Length: 25' 5"



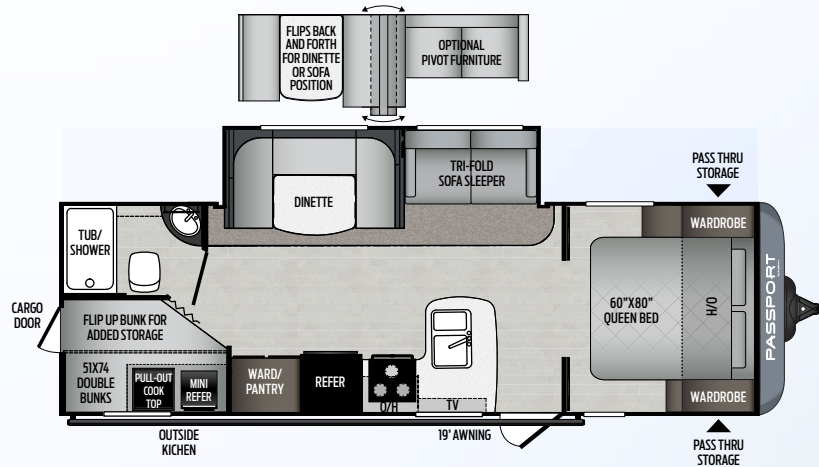
**240BH**

Bunkhouse w/ 60" x 80" queen bed  
Weight: 4911 lbs | Length: 27' 4"



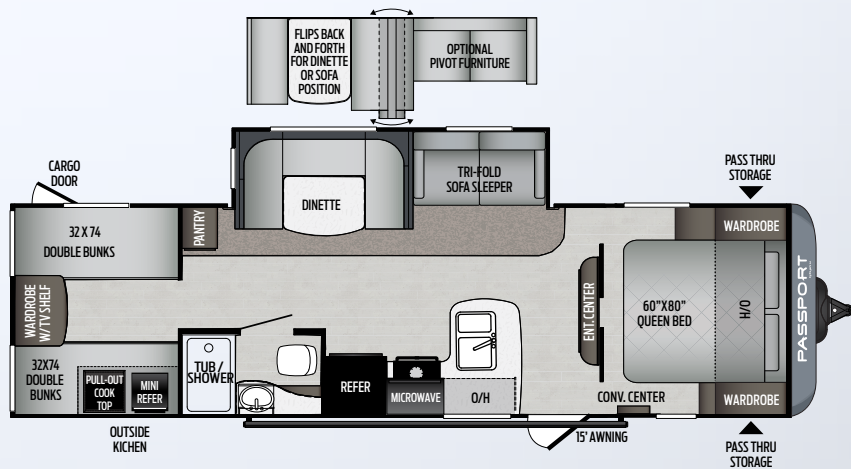
### WHAT DOES BEST IN CLASS STORAGE MEAN TO YOU?

(BICS) Many of Passport's bunkhouse floor plans provide up to 85 cu. ft. of interior storage, nearly double the amount compared to other ultra-lites. We keep Passport travel trailers the lightest in the ultra-lite class so you can take all your gear with you on your next adventure.



**267BH**

Super slide, bunkhouse w/ 60" x 80" queen bed  
Weight: 5550 lbs | Length: 30' 6"



**292BH**

Quad bunkhouse w/ pack-n-play door  
Weight: 5743 lbs | Length: 32' 4"



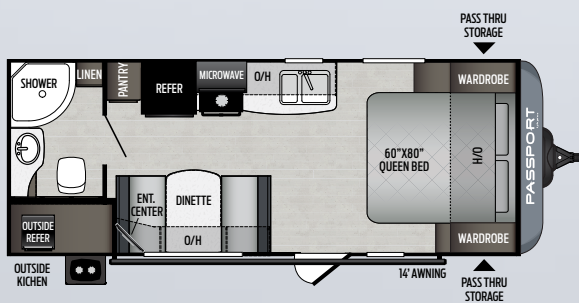
### WHAT DOES BEST IN CLASS STORAGE MEAN TO YOU?

(BICS) Many of Passport's bunkhouse floor plans provide up to 85 cu. ft. of interior storage, nearly double the amount compared to other ultra-lites. We keep Passport travel trailers the lightest in the ultra-lite class so you can take all your gear with you on your next adventure.

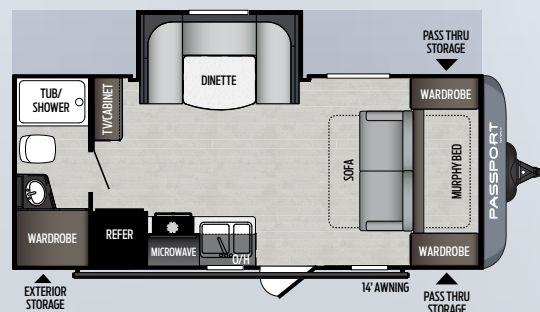
# Passport Western Edition

## TRAVEL TRAILERS

- Automotive Fiberglass front cap (GT Series)
- Lippert® Solid Step® for safe and secure entry (GT Series)
- Exceptional 45 cu. ft. pass-through storage with magnetic door hold
- Electric stabilizer jacks
- Exterior hot and cold shower
- Load equalization axles (stability and weight equalization)
- Service light near termination valves
- 4G LTE and Wi-Fi prep
- Solar prep
- Backup camera prep (GT Series)
- Black tank flush
- Heated and enclosed underbelly and valves
- Vaulted ceiling (GT Series)
- 60" x 80" queen bed
- USB ports (10, GT Series)
- Seamless, one-piece upgraded countertops
- Furrion® glass-top range with gas oven
- Deep-seated stainless steel sink with cover and residential pull-down faucet
- High performance in-floor heat duct system
- Motion activated lighting at main entrance and pass-through storage
- Power tongue jack
- 8 cu. ft. refrigerator (GT Series)
- Exclusive KeyTV™ multisource controller for satellite, cable, and over-the-air feeds



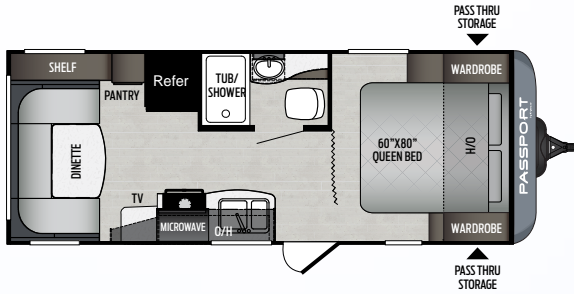
**197RBWE** | Double-axle couples coach  
Weight: 4269 lbs | Length: 24' 6"



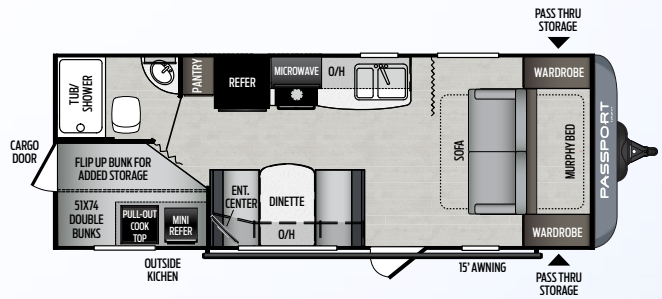
**199MLWE** | Double-axle couple's coach w/u-shaped dinette slideout  
Weight: 4210 lbs | Length: 23' 4"

# Passport Western SL Series\*

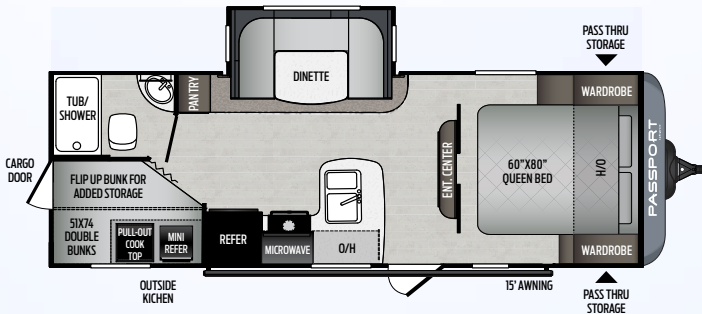
ULTRA-LIGHTWEIGHT TRAVEL TRAILERS



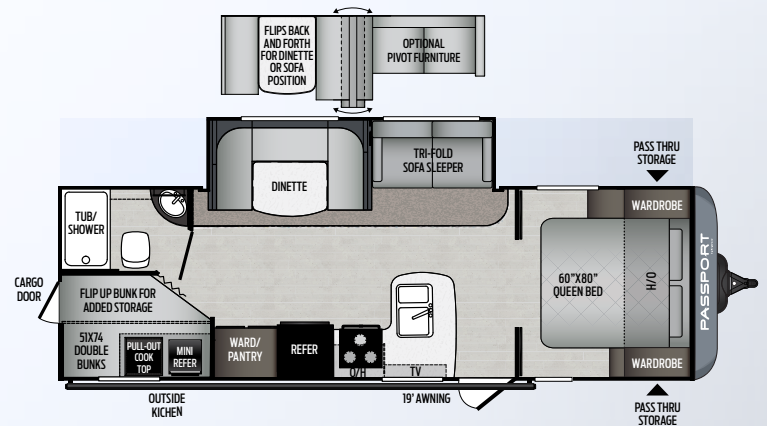
**216RDWE** | Couple's coach w/ oversized dinette  
Weight: 4210 lbs | Length: 24' 10"



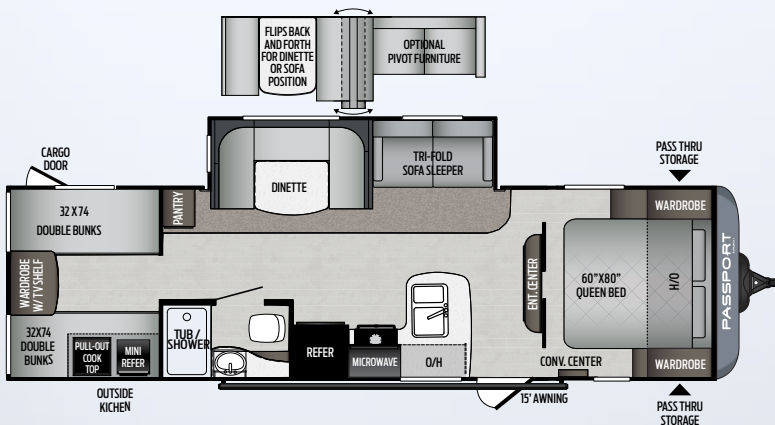
**BEST IN CLASS STORAGE** **239MLWE** | Murphy bed, bunkhouse with outside kitchen  
Weight: 4402 lbs | Length: 25' 5"



**BEST IN CLASS STORAGE** **240BHWE** | Bunkhouse w/ queen bed  
Weight: 5069 lbs | Length: 27' 10"



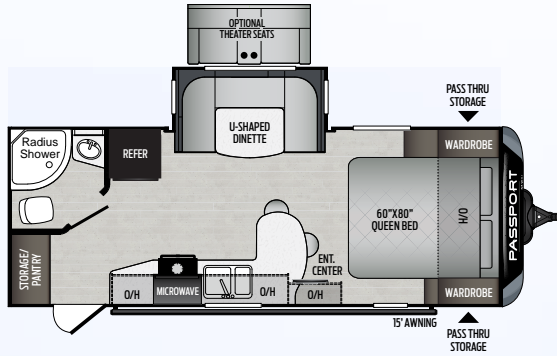
**BEST IN CLASS STORAGE** **267BHWE** | Super slide, bunkhouse w/ 60" x 80" queen bed  
Weight: 5550 lbs | Length: 30' 6"



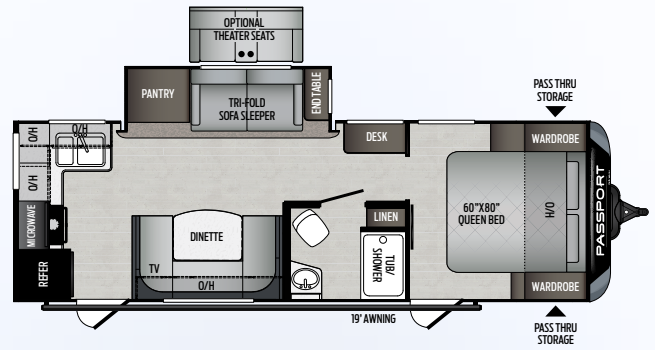
**BEST IN CLASS STORAGE** **292BHWE** | Couple's coach w/ oversized dinette  
Weight: 5878 lbs | Length: 32' 10"

# Passport Western GT Series

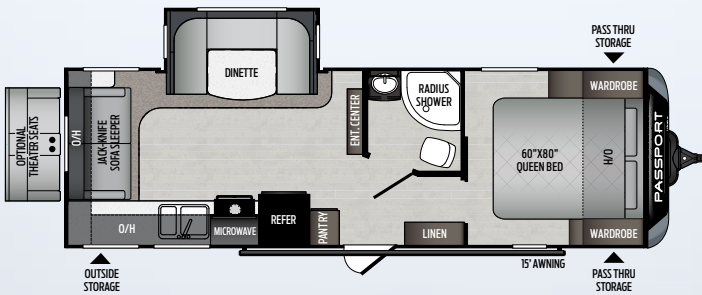
## TRAVEL TRAILER FLOOR PLANS



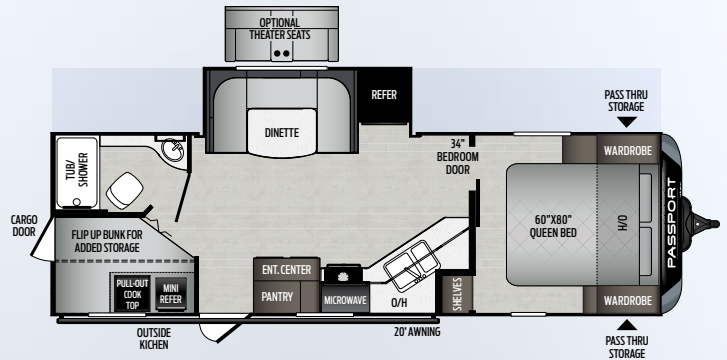
**2210RBWE** | Single-slide couple's coach  
Weight: 4796 lbs | Length: 26' 3"



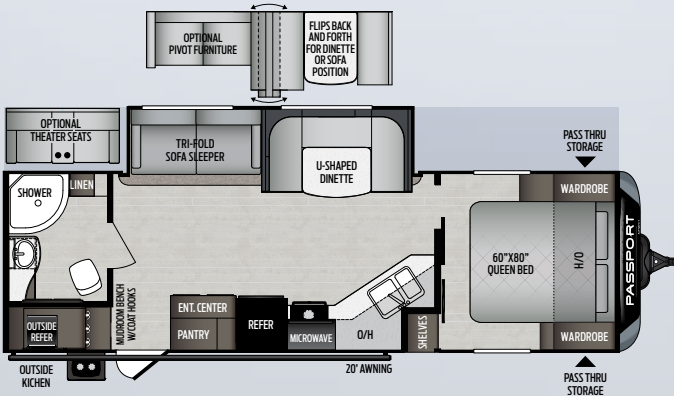
**2500RKWE** | Single slide, ultimate couples' coach w/desk  
Weight: 5546 lbs | Length: 29' 3"



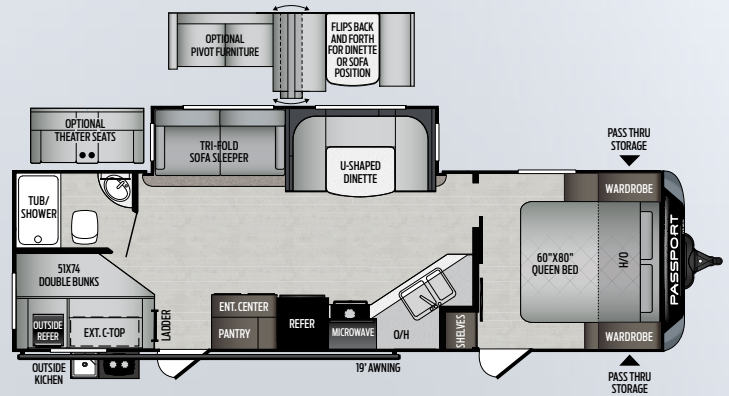
**2521RLWE** | Single-slide, ultimate couples coach  
Weight: 5450 lbs | Length: 29' 10"



**BEST IN CLASS** **2600BHWE** | Double over double bunkhouse, with outside kitchen  
Weight: 5510 lbs | Length: 30' 7"



**2710RBWE** | Mud room bench w/coat hooks walk-in pantry  
Weight: 5770 lbs | Length: 31' 5"

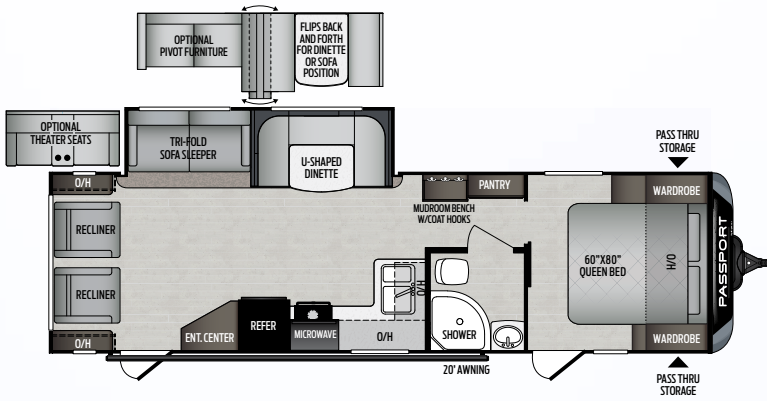


**2820BHWE** | Multi-purpose bunkhouse w/outside kitchen  
Weight: 6040 lbs | Length: 32' 11"

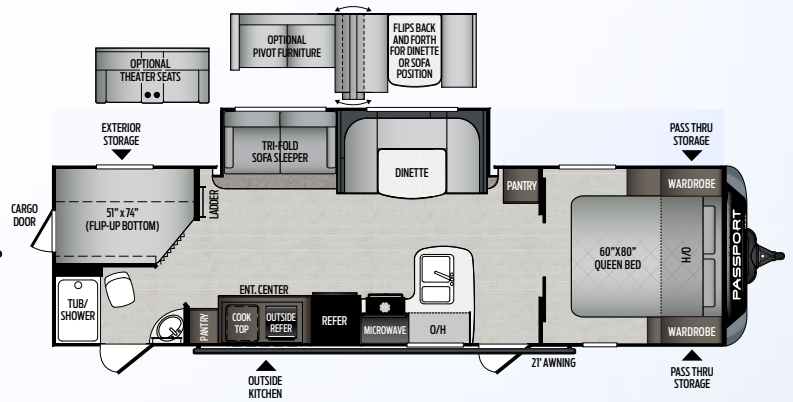


# Passport Western GT Series

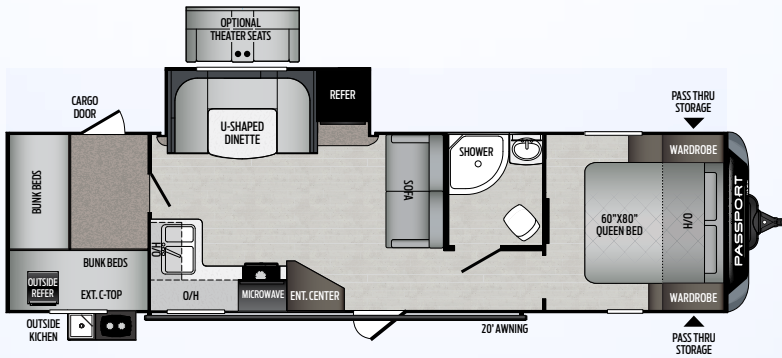
## TRAVEL TRAILER FLOOR PLANS



**2900RLWE** | Super-slide/rear living  
Weight: 6115 lbs | Length: 33' 6"



**2950BHWE** | Multi-purpose bunkhouse w/outside kitchen  
Weight: 6276 lbs | Length: 33' 9"



**3100QBWE** | Quad bunk w/ outside kitchen  
Weight: 6630 lbs | Length: 35' 11"



### WHAT DOES BEST IN CLASS STORAGE MEAN TO YOU?

(BICS) Many of Passport's bunkhouse floor plans provide up to 85 cu. ft. of interior storage, nearly double the amount compared to other ultra-lites. We keep Passport travel trailers the lightest in the ultra-lite class so you can take all your gear with you on your next adventure.

### SL-SERIES TRAVEL TRAILERS

MODEL	WEIGHT	CARRYING CAPACITY	HITCH WEIGHT	FRESH WATER	WASTE WATER	GRAY WATER	LPG	LENGTH*	WIDTH	HEIGHT	AWNING
175BH	3325	1175	410	43	30	30	40	21' 3"	8'	10' 5"	10'
197RB	4034	1566	460	43	30	30	40	23' 11"	8'	10' 4"	14'
199ML	4147	1253	425	43	30	30	40	22' 9"	8'	10' 4"	14'
216RD	3925	2075	490	43	30	30	40	24' 10"	8'	10' 5"	14'
239ML	4307	1093	425	43	38	38	40	25' 5"	8'	10' 4"	15'
240BH	4911	2089	535	43	30	30	40	27' 4"	8'	10' 8"	19'
267BH	5550	1650	695	43	30	30	40	30' 6"	8'	10' 8"	19'
292BH	5743	1457	755	43	30	30	40	32' 4"	8'	10' 8"	15'

### GT-SERIES TRAVEL TRAILERS

MODEL	WEIGHT	CARRYING CAPACITY	HITCH WEIGHT	FRESH WATER	WASTE WATER	GRAY WATER	LPG	LENGTH*	WIDTH	HEIGHT	AWNING
221ORB	4854	2146	575	43	38	38	40	26' 3"	8'	11'	15'
2500RK	5546	1454	700	43	38	76	40	29' 3"	8'	10' 8"	19'
2521RL	5359	1641	635	43	38	76	40	29' 10"	8'	10' 8"	15'
2600BH	5473	1727	645	43	38	76	40	30' 8"	8'	10' 8"	19'
271ORB	5770	1430	670	43	38	76	40	31' 5"	8'	10' 8"	19'
2820BH	5966	1234	715	43	38	76	40	32' 11"	8'	10' 8"	19'
2900RL	5980	1220	785	43	38	38	40	33' 6"	8'	11' 2"	19'
2950BH	6145	1655	705	43	38	76	40	33' 9"	8'	11' 2"	21'
3100QB	6405	2395	780	43	38	76	40	35' 11"	8'	11' 2"	19'
3221BH	6860	2140	910	43	38	38	40	36' 11"	8'	10' 8"	21'
3351BH	7020	2560	835	43	76	76	40	37' 7"	8'	10' 11"	21'
3400QD	7510	2390	1105	43	38	38	40	38' 4"	8'	10' 11"	21'

### WESTERN EDITION TRAVEL TRAILERS

	MODEL	WEIGHT	CARRYING CAPACITY	HITCH WEIGHT	FRESH WATER	WASTE WATER	GRAY WATER	LPG	LENGTH*	WIDTH	HEIGHT	AWNING
SL SERIES WESTERN	197RBWE	4269	1331	416	43	30	30	40	24' 6"	8'	10' 4"	14'
	199MLWE	4210	1190	494	43	30	30	40	23' 4"	8'	10' 2"	14'
	216RDWE	4210	1790	460	43	30	30	40	24' 10"	8'	10' 5"	15'
	239MLWE	4402	998	436	43	30	30	40	25' 5"	8'	10' 2"	15'
	240BHWE	5069	1931	526	43	30	30	40	27' 10"	8'	10' 7"	19'
	267BHWE	5550	1650	695	43	30	30	40	30' 6"	8'	10' 8"	19'
GT SERIES WESTERN	292BHWE	5878	1322	714	43	30	30	40	32' 10"	8'	10' 9"	15'
	221ORBWE	4796	2704	560	43	30	30	40	26' 3"	8'	11'	15'
	2500RKWE	5546	1454	700	43	38	76	40	29' 3"	8'	10' 8"	19'
	2521RLWE	5450	1550	640	43	30	60	40	29' 10"	8'	10' 8"	15'
	2600BHWE	5510	1690	650	43	38	76	40	30' 8"	8'	10' 8"	19'
	271ORBWE	5770	1430	690	43	30	60	40	31' 5"	8'	10' 8"	15'
	2820BHWE	6040	1160	740	43	30	60	40	32' 11"	8'	11' 2"	19'
2900RLWE	6115	1085	740	43	38	38	40	33' 6"	8'	11' 2"	19'	
2950BHWE	6276	1524	704	43	30	60	40	33' 9"	8'	11' 2"	21'	
3100QBWE	6630	2170	670	43	30	60	40	35' 11"	8'	11' 2"	19'	

DISCLAIMER: Product information is as accurate as possible as of the date of publication of this brochure. All features, floor plans, and specifications in this brochure are subject to change without notice. Please also consult Keystone's web site at [www.keystonerv.com](http://www.keystonerv.com) for more current product information and specifications. Tow Vehicle Disclaimer. CAUTION: Owners of Keystone recreational vehicles are solely responsible for the selection and proper use of tow vehicles. All customers should consult with a motor vehicle manufacturer or their dealer concerning the purchase and use of suitable tow vehicles for Keystone products. Keystone disclaims any liability or damages suffered as a result of the selection, operation, use or misuse of a tow vehicle. KEYSTONE'S LIMITED WARRANTY DOES NOT COVER DAMAGE TO THE RECREATIONAL VEHICLE OR THE TOW VEHICLE AS A RESULT OF THE SELECTION, OPERATION, USE OR MISUSE OF THE TOW VEHICLE. \*Length is defined as the distance from the centerline of hitch pin/coupler to rear bumper of trailer. Please review owner's manual prior to purchase for more information on service warranties, extended use, towing and maintenance. Owner's manuals can be found at [keystonerv.com](http://keystonerv.com).

# STANDARDS AND OPTIONS

<b>CHASSIS</b>	Satellite prep	<b>BATHROOM</b>
Engineered specifically for each floor plan	Solar prep	12V power exhaust fan
Tube-style bumper w/sewer hose storage (GT Series EAST Only) (Standard In West)	Backup camera prep (GT series only)	<b>SAFETY</b>
Fully-welded outriggers	Friction hinge door at main entrance	Four-wheel electric brakes
Cambered for added structural support	Residential-style furniture with premium fabric	Breakaway switch
Extra support cross members	Convenience center with slide, lights, awning, water system controls, and 110V receptacle	Heavy duty safety chains with clasp
Electric Cable slide-out system	<b>INTERIOR FEATURES</b>	12V power exhaust fan
Enclosed, sealed and heated underbelly	13,500 BTU A/C standard	Tinted safety glass windows
Welded aluminum framed sidewalls	30,000 BTU furnace	Multiple emergency egress windows
<b>CONSTRUCTION</b>	Ducted, in-floor heating (GT Series & SL Series)	GFI receptacles
Seamless, laminated gel-coated filon exterior walls	6-gallon gas/electric DSI water heater (17.8 gal/hr)	Carbon monoxide detector
High-density block foam insulation in sidewalls (R-7 insulation)	Winterization-ready water system	Smoke alarm
Laminated aluminum framed floor 2" thick	Residential durable Armstrong® vinyl flooring	Fire extinguisher
R-11 high density block floor insulation	12VAM/FM stereo, AUX input, Bluetooth and quality sound speakers	Propane gas leak detector
5 1/4" Crowned Roof Rafters (SL Series)	LED, flat-screen HDTV, standard	Deadbolt lock on entrance doors
Vaulted Ceiling Roof Rafters (GT Series)	Upgraded residential window treatments and valances	Manual override on slide system
One piece seamless Alpha Superflex TPO roof	Residential-style interior doors	Spare tire kit
R-11 ceiling rolled fiberglass insulation	Upgraded leather furniture w/tri-fold sofa	Snow load roofs
Insulated lockable radius baggage doors with hold backs	LED interior lights	<b>WESTERN EDITION FEATURES</b>
<b>EXTERIOR FEATURES</b>	Vaulted ceiling (GT Series only)	Snow load roofs
Insulated radius entrance door with screen door	USB charging ports throughout	<b>OPTIONS</b>
Double entry steps at main door (SL Series only)	Heated and enclosed underbelly	15,000 BTU A/C
Lippert® Solid Step® for safe and secure entry (GT Series only)	Vaulted ceiling (GT Series only)	50 AMP service (GT's Only, N/A Western Edition)
Heavy-duty Electric Tongue Jack	USB charging ports throughout	Theatre seating IPO tri-fold sofa (GT's Only)
4 Electric Stabilizer Jacks	Heated and enclosed underbelly	Pivot furniture (267BH, 292BH, 2710RB, 2820BH, 2900RL, 2950BH, 3221BH, 3351BH and 3400QD)
Two (2), 20 lb. propane bottles with flip-top cover	<b>KITCHEN</b>	
Dual battery rack over A-frame	6 cu. ft. double-door RV refrigerator (SL Series only)	
Rain gutters with extended downspouts	8 cu. ft. RV refrigerator (GT Series only)	
Electric adjustable awning	Glass-top stove	
Lighted exterior pass-through storage compartment w/motion light*	Metal high-rise faucet	
Portable outdoor grill (select models), not all outside kitchen models	Microwave with carousel	
Patio entrance light	3-burner, high output range	
Exterior shower w/ hot and cold taps	Range hood	
Front diamond plate	Shaker style wood cabinets	
2-Tone Painted Fiberglass front cap w/KeyShield™ rock guard (GT Series only)	Gas oven (N/A 175BH)	
Fold-away exterior grab handle (main door, GT Series only)	Seamless countertops	
Load equalization axles (spread axle design). Excludes 197RB/199ML/239ML	Stainless steel sink w/pull-down faucet	
Dexter® E-Z lube axles	Trash can storage (select models)	
Exterior speakers	60"x 80" queen size bed (N/A 3351BH)	
Exterior light at dump valves	Quilted bed sheets	
15" aluminum wheels	Oversized wardrobes	
15" radial tires	<b>BEDROOM (MAIN)</b>	
Aluminum step	Nighttime reading lights	
Upgraded graphics package	Under-bed storage	
LED awning lights	Bedside power outlets w/USB ports	
Black tank flush	Solid wood, custom-built medicine cabinet w/mirror	
Satellite prep	Tub surround with built-in shelves	
Solar prep	Radius shower curtain	
	Pedestal foot flush toilet	

# BUILT FOR THE LONG HAUL



PRINT 12.2019

